

Catamount®



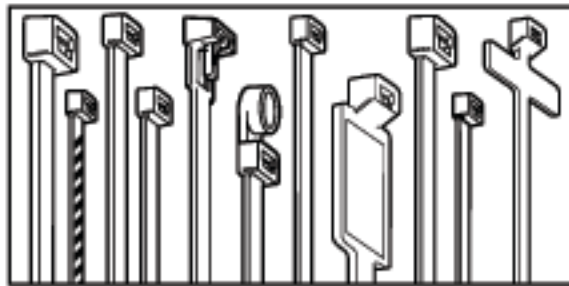
T&B Catalog Number: L-5-50-9-C
UPC Number: 72849493331
Description: Cable Tie 50lb 5" Natural All-Nylon 100 Per Bag

Status: Active

General	
Material	Nylon 6.6
Color	Natural
Dimension Information	
Length (inches)	5.5
Width (inches)	0.187
Max. Wire Bundle Diameter (inches)	1
Min. Wire Bundle Diameter (inches)	1/16
Specifications	
Tensile Strength (lbs.)	50
Temperature Rating	-40°F to 185°F
Flammability Rating	UL 94 V-2
Tooling	
Application Tools	ERG50, QC-100, L-200, L-400-C
Packaging	
T&B Order Multiple	100
T&B Inner Pack	100
Package in Units	10000
Package Type	Standard
T&B Sold in UOM	Each
T&B Weight Per UOM	2.2 lbs. per 1000
Application Support	
Overview	Available on Website
Material Selection Guide	Available on Website
Available Colors	Available on Website
Certifications	
RoHS Compliance	Yes
Certifications	



Ty-Fast® Cable Ties



- MINIATURE
- HEAVY DUTY
- INTERMEDIATE
- EXTRA HEAVY DUTY
- STANDARD
- RELEASABLE TIES

- MOUNTING HEAD
- STRIPED TIES
- RESTRICTED BUNDLE
- IDENTIFICATION TIES
- MIL-SPEC TIES

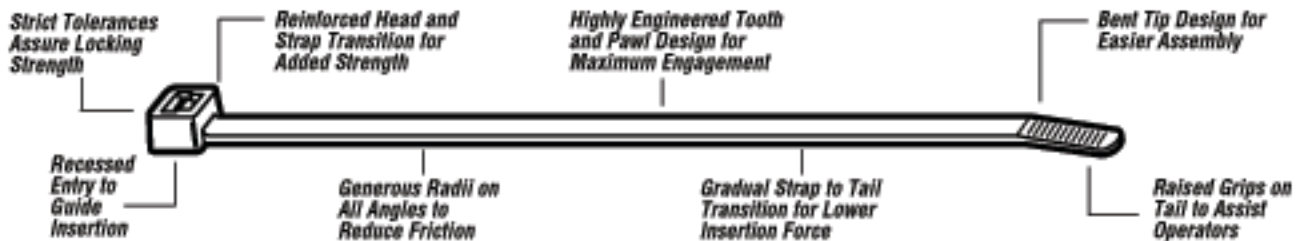
Ty-Fast® Cable Ties are available in lengths from 4" to our exclusive 48" strap. Cable Ties will satisfy bundling requirements from 1/8" to 15" and loop tensile strengths from 18 to 175 pounds.

Cable Ties are stocked in materials and colors as listed. Contact your Ty-Fast® Distributor or Customer Service Representative for availability in special materials and colors.

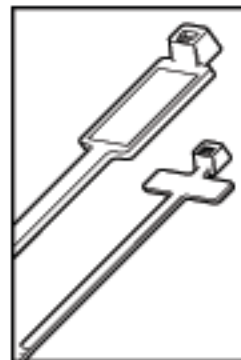
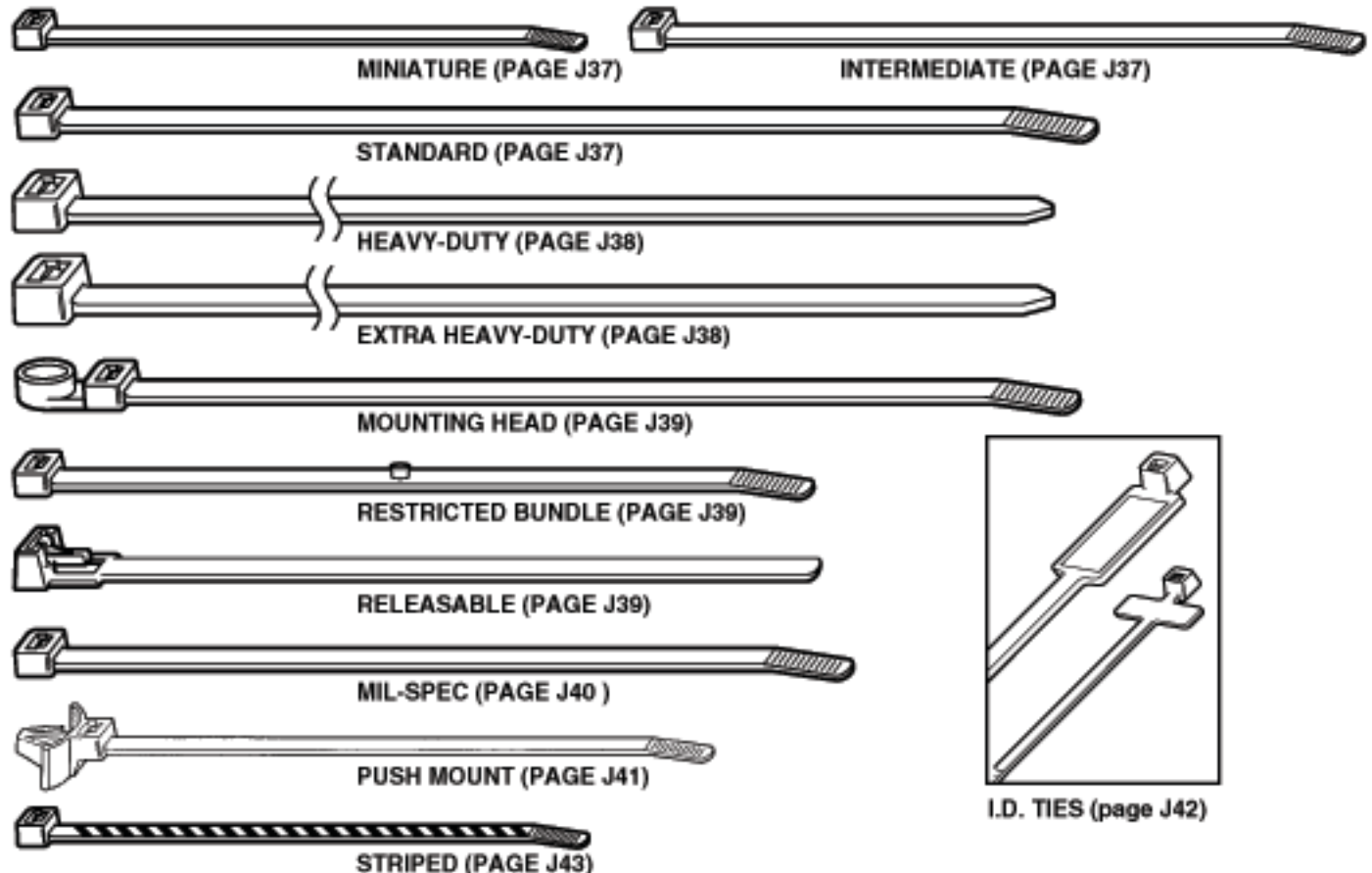
Where applicable, Ty-Fast® Cable Ties are UL Recognized, Mil-Spec Approved and/or QPL Listed.

State-of-the-art robotic and raw material handling equipment assures product and material integrity throughout the manufacturing process. Overall quality is achieved through statistical analysis and quality driven operator objectives. Ty-Fast® has attained Mil-Spec I-45208 quality ratings from a number of equipment manufacturers.

Ty-Fast® products are sold through stocking T&B Distributors.



Ty-Rap®/Ty-Fast®



I.D. TIES (page J42)

Thomas & Betts

Catamount® Cable Ties

Catamount® Ties and Terminals fit the needs of general-purpose fastening and wire terminations. Installers quickly discover that Catamount products offer durable and value-priced cable bundling for a variety of commercial and residential construction applications. Electricians can also take advantage of other benefits in stocking Catamount products in their toolboxes, such as more terminals per bag in most popular sizes than leading comparable brands.

Catamount Ties and Terminals are offered in a wide range of sizes, styles and colors and meet listing requirements for most electrical termination and fastening projects. A choice of matching tools are also offered to provide quick and reliable installations.

Miniature — Series 18



CAT. NO.	LENGTH (IN.)	MAX. BUNDLE DIA.	COLOR	STD. QTY.
L-4-18-9-C	4.0	1/2	Natural	100
L-4-18-0-C	4.0	1/2	Black	100
L-6-18-9-C	6.4	1 1/2	Natural	100
L-6-18-0-C	6.4	1 1/2	Black	100
L-8-18-9-C	8.0	2	Natural	100
L-8-18-0-C	8.0	2	Black	100

Bulk packages available. Contact Customer Service.

Use QC-102, L-200, L-400-C or ERG-50 Installation Tools

Intermediate — Series 30



CAT. NO.	LENGTH (IN.)	MAX. BUNDLE DIA.	COLOR	STD. QTY.
L-5-30-9-C	5.6	1 1/2	Natural	100
L-5-30-0-C	5.6	1 1/2	Black	100
L-8-40-9-C	8.5	2	Natural	100
L-8-40-0-C	8.5	2	Black	100
L-11-40-9-C	11.5	3	Natural	100
L-11-40-0-C	11.5	3	Black	100
L-14-40-9-C	14.5	4	Natural	100
L-14-40-0-C	14.5	4	Black	100

Bulk packages available. Contact Customer Service.

Use QC-102, L-200, L-400-C or ERG-50 Installation Tools

Standard — Series 50



CAT. NO.	LENGTH (IN.)	MAX. BUNDLE DIA.	COLOR	STD. QTY.
L-5-50-9-C	5.5	1	Natural	100
L-5-50-0-C	5.5	1	Black	100
L-7-50-0-C	7.5	1 1/2	Natural	100
L-7-50-9-C	7.5	1 1/2	Black	100
L-11-50-9-C	11.1	3	Natural	100
L-11-50-0-C	11.1	3	Black	100
L-14-50-9-C	14.1	4	Natural	100
L-14-50-0-C	14.1	4	Black	100

Bulk packages available. Contact Customer Service.

Use QC-102, L-200, L-400-C or ERG-50 Installation Tools

Heavy-Duty — Series 120



CAT. NO.	LENGTH (IN.)	MAX. BUNDLE DIA.	COLOR	STD. QTY.
L-8-120-9-C	8.0	2	Natural	100
L-8-120-0-C	8.0	2	Black	100
L-11-120-9-C	11.1	3	Natural	100
L-11-120-0-C	11.1	3	Black	100
L-14-120-9-C	14.2	4	Natural	100
L-14-120-0-C	14.2	4	Black	100
L-18-120-9-L	18.0	4 1/2	Natural	50
L-18-120-0-L	18.0	4 1/2	Black	50
L-24-120-9-L	24.2	7	Natural	50
L-24-120-0-L	24.2	7	Black	50
L-28-120-9-L	28.0	9	Natural	50
L-28-120-0-L	28.0	9	Black	50

Use L-300C or ERG-120 Installation Tool

Extra Heavy-Duty — Series 175



CAT. NO.	LENGTH (IN.)	MAX. BUNDLE DIA.	COLOR	STD. QTY.
L-24-175-9-L	24.0	7.2	Natural	50
L-24-175-0-L	24.0	7.2	Black	50
L-34-175-9-L	34.0	10	Natural	50
L-36-175-9-L	36.0	10 1/2	Natural	50
L-36-175-0-L	36.0	10 1/2	Black	50
L-41-175-9-L	41.0	12	Natural	50
L-41-175-0-L	41.0	12	Black	50
L-48-175-9-L	48.0	15	Natural	50
L-48-175-0-L	48.0	15	Black	50

Use L-300C Installation Tool

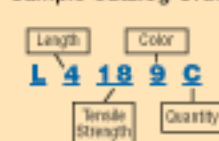
Identification Ties

CAT. NO.	LENGTH (IN.)	MAX. BUNDLE DIA.	COLOR	STD. QTY.
L-7-50ID-9-C	7.675	1 1/2	Natural	100
L-4-18ID-9-C	4.0	1/2	Natural	100

Bulk packages available. Contact Customer Service.

Use QC-102, L-200 or L-400-C Installation Tool

Sample Catalog Order:



4" Length, 18-lb. Tensile Strength, Natural Color, 100-Pack Quantity

Color Table

- | | |
|------------|-------------------------|
| 0 - Black | 9 - Natural |
| 1 - Brown | 11 - Fluorescent Pink |
| 2 - Red | 16 - Fluorescent Orange |
| 3 - Orange | 17 - Fluorescent Yellow |
| 4 - Yellow | 18 - Fluorescent Green |
| 5 - Green | 20 - Fluorescent Blue |
| 6 - Blue | |
| 7 - Purple | |
| 8 - Gray | |

